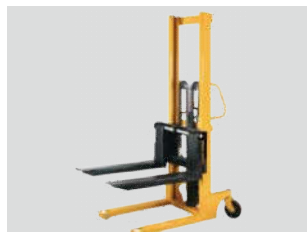
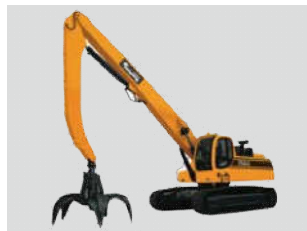


## KSOB-090 青铜卷制轴承 Bronze - Wrapped Bearings



## KS0B-090 青铜卷制轴承 Bronze-Wrapped Bearing



### 结构特性 Structure Characteristics

以 CuSn8 青铜作为基板卷制而成的一种具有高承载、高耐磨的经济型薄壁铜基卷制轴承。根据不同的润滑条件，我们可以提供菱形油穴和油孔两种形式，菱形油穴用于油脂的润滑，通孔用于流体润滑，这样的设计可以确保在轴承运行初期就能建立润滑油膜，因此可以降低起始摩擦系数。

The bearing is made with CuSn8 bronze alloy which is featured with high load capacity and good anti-wearing characteristics. The diamond shape indents on the surface of the bearing serve as oil reservoir to generate oil film for the lubricating during the initial running. The bearings are mainly suitable for agriculture machineries and construction machineries applications.




### 产品应用 Application

农用机械、建筑机械、起重机、卡车底盘部件、输送机、升降机、卷扬机、校平等。

Agricultural machine, construction machine, crane, underpan parts, conveyor, elevator, winch, planing machine...

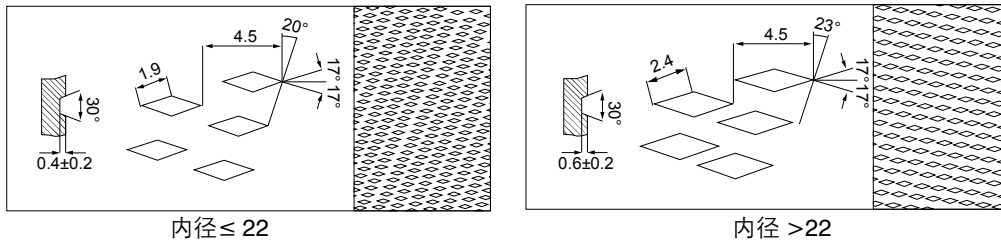
实际运用中根据使用工况的不同，基体可以采用不同牌号的合金，表面可以加工成其他形式的油孔和油槽。产品范围包括：KSOB-090、KSOB-092、KSOB-09G。

According to the different working conditions and environmental protection, different type of alloy can be chosen, product range includes

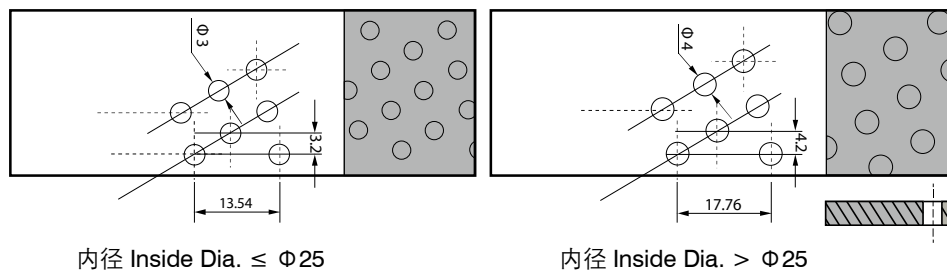
有关数据 Data		代号Grade	KSOB-090	KSOB-092	KSOB-09G
		材料名称 Material	CuSn8P (Qsn8-0.3)	CuSn8P (Qsn8-0.3)	CuSn8P+石墨 (Qsn8-0.3+graphite)
除了目录中显示的标准产品外，还可以提供非标产品或根据客户要求订购。 We can also develop according to customers special request while out of this table.					
密度 g/cm <sup>3</sup> Density			8.8	8.8	8.3
最大动载 N/mm <sup>2</sup> Max Dynamic Load			40	40	40
最高线速度(脂润滑) m/s Max Linear Velocity ( Grease )			2.5	2.5	2.5
最高PV值(脂润滑) N/mm <sup>2</sup> ·m/s Max PV value ( Grease )			2.8	2.8	2.8
抗拉强度 N/mm <sup>2</sup> Pressure strength			460	460	460
屈服强度 N/mm <sup>2</sup> Yield Strength			260	260	230
硬度 HB hardness			90~150	90~150	90~150
相配轴 Mating Axis	硬度 HRC Hardness		≥50	≥50	≥50
	粗糙度 Roughness		0.4~1.0	0.4~1.0	0.4~1.0
适用温度 °C Working Temperature			-40~150	-40~150	-40~150
摩擦系数 Friction Coefficient			0.06~0.15	0.06~0.15	0.03~0.1
导热系数 W/m·K coefficient of heat conduction			58	58	58
线膨胀系数(轴向) Linear expansion coefficient			18.5×10 <sup>-6</sup> /K	18.5×10 <sup>-6</sup> /K	18.5×10 <sup>-6</sup> /K
针对性运用领域 Pertinence applicaton			产品适用于起重机械、建筑机械、采矿机械，农业机械，森林机械等。 Application: hoisting,mining machinery. Forest machinery, agricultural machinery etc.	产品广泛运用于农业机械、建筑机械、工程机械等。 Application: Agricultural Machinery Forestry machinery, Heavy duty construction machinery etc	它具有很低的摩擦系数，较好的耐磨性等优点，能在无油或少油的条件下工作。产品广泛应用于启动马达起升机，工程机械，汽车，卡车，拖拉机等。 Application: starting motor hoisting machines and other construction machines, automobiles, tractors, trucks, machines tools and some mineral engines

## KSOB-090 系列青铜卷制轴套 KSOB-090 Bronze-Wrapped Bushes

### 油穴型式 Oil Sockets Format



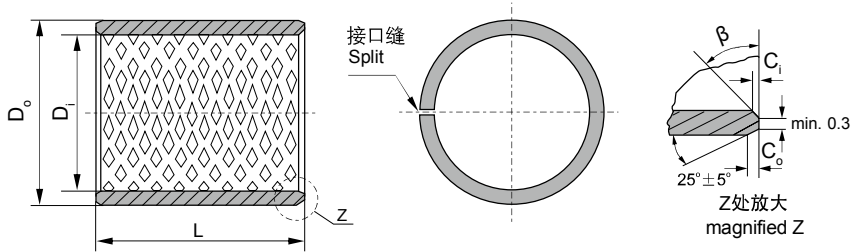
### 通孔型式 Oil Apertures Format



### 标准衬套公差 (依据 DIW W91/1503547) Standard tolerance for bushes (As per to DIW W91/1503547)

标准直径 Standard Dia.	衬套外径尺寸 O.D.Size	相配座孔 Housing Bore	衬套内径尺寸 I.D.Size	相配轴径 Axle
10~18	+0.065 +0.030	+0.018 0	+0.046 0	-0.016 -0.043
18~30	+0.075 +0.035	+0.021 0	+0.052 0	-0.020 -0.020
30~50	+0.085 +0.045	+0.025 0	+0.062 0	-0.025 -0.064
50~80	+0.100 +0.055	+0.030 0	+0.074 0	-0.030 -0.076
80~120	+0.120 +0.070	+0.035 0	+0.087 0	-0.036 -0.090
120~180	+0.170 +0.100	+0.400 0	+0.100 0	-0.043 -0.106
180~250	+0.210 +0.130	+0.046 0	+0.115 0	-0.050 -0.122
250~315	+0.260 +0.170	+0.052 0	+0.130 0	-0.056 -0.137

# KSOB-090 青铜轴套规格及公差 KSOB-090 Bronze Sleeve Bushing Specification & Tolerance



内外倒角 ID and OD chamfers

$S_3$	$C_o$	$C_i$	$\beta$
0.75	$0.5 \pm 0.3$	$0.25 \pm 0.2$	$35^\circ \pm 5^\circ$
1.00	$0.6 \pm 0.3$	$0.30 \pm 0.2$	$35^\circ \pm 5^\circ$
1.50	$0.7 \pm 0.3$	$0.50 \pm 0.3$	$35^\circ \pm 5^\circ$

$S_3$	$C_o$	$C_i$	$\beta$
2.00	$1.2 \pm 0.4$	$0.50 \pm 0.3$	$35^\circ \pm 5^\circ$
2.50	$1.8 \pm 0.6$	$0.60 \pm 0.3$	$45^\circ \pm 5^\circ$

单位Unit: mm

内径 $D_i$ $\phi d$	外径 $D_o$ $\phi D$	长度 L $\begin{smallmatrix} 0 \\ -0.40 \end{smallmatrix}$												
		10	15	20	25	30	35	40	50	60	70	80	90	100
10	12	1010	1015	1020										
12	14	1210	1215	1220										
14	16	1410	1415	1420	1425									
15	17	1510	1515	1520	1525									
16	18	1610	1615	1620	1625									
18	20	1810	1815	1820	1825									
20	23	2010	2015	2020	2025									
22	25	2210	2215	2220	2225	2230								
24	27		2415	2420	2425	2430								
25	28		2515	2520	2525	2530								
28	31		2815	2820	2825	2830								
30	34		3015	3020	3025	3030	3035	3040						
32	36		3215	3220	3225	3230	3235	3240						
35	39		3515	3520	3525	3530	3535	3540						
40	44			4020	4025	4030	4035	4040	4050					
45	50			4520	4525	4530	4535	4540	4550					
50	55			5020	5025	5030	5035	5040	5050	5060				
55	60			5520	5525	5530	5535	5540	5550	5560				
60	65				6025	6030	6035	6040	6050	6060	6070			
65	70					6530	6535	6540	6550	6560	6570			
70	75					7030	7035	7040	7050	7060	7070	7080		
75	80					7530	7535	7540	7550	7560	7570	7580		
80	85					8030	8035	8040	8050	8060	8070	8080		
85	90					8530	8535	8540	8550	8560	8570	8580	8590	
90	95					9030	9035	9040	9050	9060	9070	9080	9090	
95	100							9540	9550	9560	9570	9580	9590	95100



## KS0B-090 青铜轴套规格及公差 KS0B-090 Bronze Sleeve Bushing Specification & Tolerance

单位Unit: mm

内径 D <sub>i</sub> φd	外径 D <sub>o</sub> φD	长度 L $\begin{smallmatrix} 0 \\ -0.40 \end{smallmatrix}$									
		25	30	35	40	50	60	70	80	90	100
100	105					10050	10060	10070	10080	10090	100100
105	110					10550	10560	10570	10580	10590	105100
110	115					11050	11060	11070	11080	11090	110100
115	120					11550	11560	11570	11580	11590	115100
120	125						12060	12070	12080	12090	120100
125	130						12560	12570	12580	12590	125100
130	135						13060	13070	13080	13090	130100
135	140						13560	13570	13580	13590	135100
140	145						14060	14070	14080	14090	140100
145	150						14560	14570	14580	14590	145100
150	155						15060	15070	15080	15090	150100
155	160						15560	15570	15580	15590	155100
160	165						16060	16070	16080	16090	160100
165	170						16560	16570	16580	16590	165100
170	175						17060	17070	17080	17090	170100
175	180						17560	17570	17580	17590	175100
180	185						18060	18070	18080	18090	180100
185	190						18560	18570	18580	18590	185100
190	195						19060	19070	19080	19090	190100
195	200						19560	19570	19580	19590	195100
200	205						20060	20070	20080	20090	200100
205	210						20560	20570	20580	20590	205100
215	220						21560	21570	21580	21590	215100
225	230						22560	22570	22580	22590	225100
230	235						23060	23070	23080	23090	230100
240	245						24060	24070	24080	24090	240100
250	255						25060	25070	25080	25090	250100
260	265						26060	26070	26080	26090	260100
270	275						27060	27070	27080	27090	270100
280	285						28060	28070	28080	28090	280100
290	295						29060	29070	29080	29090	290100
300	305						30060	30070	30080	30090	300100